
KENTUCKY LEPIDOPTERIST

Newsletter of the Society of Kentucky Lepidopterists

VOLUME 21, NUMBER 4: DECEMBER 1995

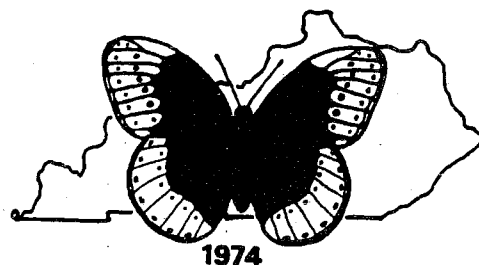
BARRY S. NICHOLS, Editor

7004 Ethan Allen Way,

Louisville, KENTUCKY USA 40272

BITNET: BSNICH01@ULKYVM

INTERNET: BSNICH01@ULKYVM.LOUISVILLE.EDU



EDITORS' NOTES

Greetings once again fellow "leppers"! This is the final issue for 1995. It will not include a dues notice. Instead, the next issue (22:1) will contain the notice. It will be in the mailstream in less than two weeks.

This issue contains the **FOURTH OF JULY BUTTERFLY COUNT 1996** information, preliminary **Annual Meeting notes for Fall 1996**, **Annual Meeting minutes and photos for 1995**, and a few regular articles. I wish I could say that we have a healthy article file but with the next issue it will be totally depleted. I need to get yet another issue out immediately after the next and fear it will not be a lengthy one without your help. Please send your contributions as soon as possible. You may send via mail (preferably on computer disk), or via E-mail at one of the addresses above.

The deadlines for the 1996 issues are:

22:1 As soon as possible. It's already being formatted.

22:2 July 31, 1996

22:3 September 30, 1996

22:4 November 15, 1996

with the issue going into the mail roughly two to three weeks later (barring problems.).

Please mark these dates on your calendar.

The next issue will contain an article by our current President, Jim Taylor. It will also contain an up to date membership list. As noted last issue, the grand total of postcards

with data for the membership list was SIX. Therefore, we will not be able to include interests, etc. Perhaps there will be more interest next year. There has also been little in the way of contributions for the **LEP BEHAVIOR** column. Is anyone rearing or gardening? We need your info! For structure of submissions for the column, please see issue 21:1. I will probably rerun the structure in a future newsletter to refresh. Anyway, I hope this finds you well. Happy hunting!

The Annual 4th of July Horner Wildlife Sanctuary Butterfly Count

by Charles V. Covell, Jr

Biology Department

University of Louisville

Louisville, Kentucky USA 40272

Annual July 4th Butterfly Count will be held at Horner Wildlife Sanctuary, Brownsboro, Oldham Co., on Sat. July 6. Counters should meet at 9:30 AM at the General Store at Brownsboro, which is 1 mile North of Interstate 71 from exit 14. We will count beginning at 10:00 AM sharp, and will eat our lunches there. The count will conclude at 3:00 PM. Those wishing to collect moths that night are welcome to do so. Contact Charlie Covell if you plan to participate: (502) 852-6771 (work) 456-6122 (Home), or write at Biology Dept., Univ. of Louisville, Louisville, KY 40292-0001.

The 1996 Annual Meeting of the Society of Kentucky Lepidopterists

by Charles V. Covell, Jr
Biology Department
University of Louisville
Louisville, Kentucky USA 40272

The 1996 Annual Meeting will be at the University of Louisville, Room 321 of Life Sciences Bldg., Sat. Nov. 9, 1996. The annual party will be at 7:30 the evening before, Nov. 8, at the Covells'. This year's special guest speaker will be Dr. Richard Brown, Curator of the Mississippi Entomological Museum. The title of his talk will be announced later.

THE 22ND ANNUAL MEETING OF THE SOCIETY OF KENTUCKY LEPIDOPTERISTS

by John J Enz
Department of Biology,
University of Louisville,
Louisville, Kentucky 40292

The annual gathering of the Society of Kentucky Lepidopterists took place at the University of Louisville on Nov. 10-11, 1995. Just over 40 persons were counted at the 2 day event and included: Eleanor Adams (KY), James Adams (GA), Natalya Axseldrod (KY), George Balogh (MI), Rozenna Carr (KY), Richard Cassell (KY), Charles V. Covell Jr. (KY), Zachary Dembo (KY), Rohan Dirit (KY), John Enz (KY), Lester Ferge (WI), Paul Florence (KY), Loran Gibson (KY), Richard A. Henderson (KY), Yin-Rei Hicks (IN), Jessica Hutti (KY), John Macgregor (KY), Eric Metzler (OH), Barry Nichols (KY), Floyd W. Preston (KS), June Preston (KS), Roy W. Rings (OH), Sandra Roberts (KY), Ron F. Rockwell (U.S.), Dorothy B. Rountree (KY), John Shuey (IN), Phil Sisto (KY), Lisa Summers (KY), Jim Taylor (GA), Reed Watkins (OH), Charles Wright

(KY), Don Wright (OH), and Roger Zebold (OH).

On Friday evening, about 25 of us gathered for our annual "get reacquainted" party at the home of Jay, Marianne and Jessica Hutti. Charles Covell brought several new Lepidopteran videos for us to enjoy as we ate and told the year's "war" stories. The party broke up around midnight after several friendly games of pool.

Saturday morning brought us to the Entomology lab. at the University of Louisville. With donuts in hand, we viewed the University of Louisville collections along with specimens brought in from several of the members collections. Many of us were able to obtain some long sought after identifications from our expert members. Quality lepidopteran literature and assorted merchandise were also available for purchase.

The annual business meeting was called to order by President Floyd Preston at 1:00 PM. The treasurer's report revealed the balance in the Society's account to be \$676.02. Election of officers were then held. Election results were: Jim Taylor, President; Charles V. Covell, Treasurer; John Enz, Secretary; Barry Nichols, Editor; Paul Florence, Field Trip Coordinator; and Director at Large, Jessica Hutti. New business included the adoption of several wording changes in the Society's constitution in order to bring the written document up to date. The constitution (with changes) will be in the next issue. Charles Covell gave a report on the 4th of July butterfly count which received media coverage by the local television stations. He also asked the Society for permission to spend \$20.00 to have our data included in the North American Butterfly Association survey. Barry Nichols spoke about the lack of newsletter contributions and the resulting delays. Barry also reminded everyone that dues are per

calendar year with notices sent out with the last newsletter of the year and a final notice with the first issue after the end of a membership. After the final notice, members are dropped. Loran Gibson reported on recording the first state record of *Catocala relictata* at a car wash in Bullitt County.

Other announcements included a report by Roger Zebold on the upcoming activities of the Ohio Lepidopterists with an invitation for us to join in. It was also suggested that we plan another field trip to Pine mountain.

Dr. Lawrence Gall from the Yale University, Peabody Museum was our guest speaker this year. He gave a presentation entitled "Studies on the *Catocala* (Underwing Moths) of North America: Progress on the Moths of North America Fascicle". Several slide presentations by society members then followed. John Shuey presented "Butterfly Conservation in Indiana", James Adams presented "Mimicry in Tropical Lepidopterans and Other Insects", Eric Metzler presented "Problems and Solutions Illustrating Genitalia" and Charles Covell presented "Butterflies in the Garden and in Maine". The annual door prize drawing concluded the days activities with most of us enjoying the evening meal together at Masterson's restaurant.

WHERE IS SPRING?

by John J Enz
Department of Biology,
University of Louisville,
Louisville, Kentucky 40292

I think Mother Nature must have lost her calendar. It is April already and there is still no sign of spring. Here in Kentucky, we welcomed the first day of spring by making snowmen and now there is talk of snow on Easter! There have been a few days above 50 degrees but most of those have been very

cloudy. I have counted only 4 warm, sunny days conducive to butterfly flight to date (April 7). I, of course, went out on these days but only found butterflies on the most recent sunny day - April 3. A total of only 4 species were recorded. These were: Question Mark, *Polygonia interrogationis*; Comma, *Polygonia commma*; Spring Azure, *Celastrina ladon*; and Dusky Azure, *Celastrina ebenina*. These observations were made in Oldham County, Kentucky at the Horner Wildlife Sanctuary.

The weather has also taken a toll on wildflowers with most species showing a delayed blooming. The available nectar plants in this same area included: Cutleaved toothwort, *Dentaria laciniata*; Hepatica, *Hepatica acutiloba*; False Rue Anemone, *Isopyrum biternatum*; Spring Cress, *Cardamine bulbosa*; and Spring Beauty, *Claytonia virginica*.

Hopefully, we will soon see a weather change as I am going stir crazy.

FIELD REPORTS FROM KENTUCKY, SPRING 1996

by Charles V. Covell, Jr
Biology Department
University of Louisville
Louisville, Kentucky USA 40272

The winter has been long and cold, and spring has arrived at last. Plants have bloomed late, and as of this date (May 1) the azaleas and dogwoods are finally in full flower.

Charlie Covell went alone to the gully off Bearcamp Road in Bullitt Co., KY on Sunday April 21. Not too many butterflies were out, but the following were recorded: *Epargyreus clarus* (Silver-spotted Skipper), *Pterourus glaucus* (Eastern Tiger Swallowtail), *Anthocharis midea* (Falcate Orangetip), *Pieris virginiensis* (West Virginia White, *Colias*

philodice (Common Sulphur), *Celastrina ebenina* (Dusky Azure) & *Callophrys henrici* (Henry's Elfin).

On Saturday, April 27, the spring field trip of the Society was held at Bernheim Forest, Oldham Co. It was sunny but rather cool, warming into the low sixties by mid afternoon. Attending were Paul Florence, John Enz, Akira Watenabe, Natalya Axseldrod, Rozenna Carr, Charlie Covell, and Sandra Denbo with son Zach and daughter Hannah. We visited the forest roads and a field and pond area in the Natural Forest part of Bernheim and recorded the following: *Erynnis juvenalis* (Juvenal's Duskywing), *Erynnis brizo* (Sleepy Duskywing), *Battus philenor* (Pipevine Swallowtail), *Pterourus glaucus* (Eastern Tiger Swallowtail), *Pterourus troilus* (Spicebush Swallowtail), *Eurytides marcellus* (Zebra Swallowtail), *Pieris rapae* (Cabbage Butterfly), *Anthocharis midea* (Falcate Orangetip), *Colias eurytheme* (Alfalfa Butterfly), *Colias philodice* (Common Sulphur), *Celastrina ladon* (Spring Azure), *Everes comyntas* (Eastern Tailed Blue), *Phyciodes tharos* (Pearl Crescent), and *Anaea andria* (Goatweed Emperor. The *Erynnis* spp. (in particular *E. comyntas*) were the most common butterflies observed. It was a very relaxing and enjoyable trip.

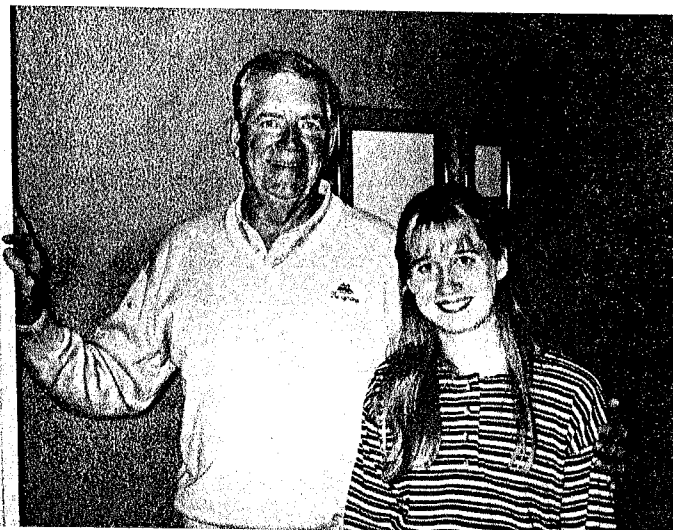
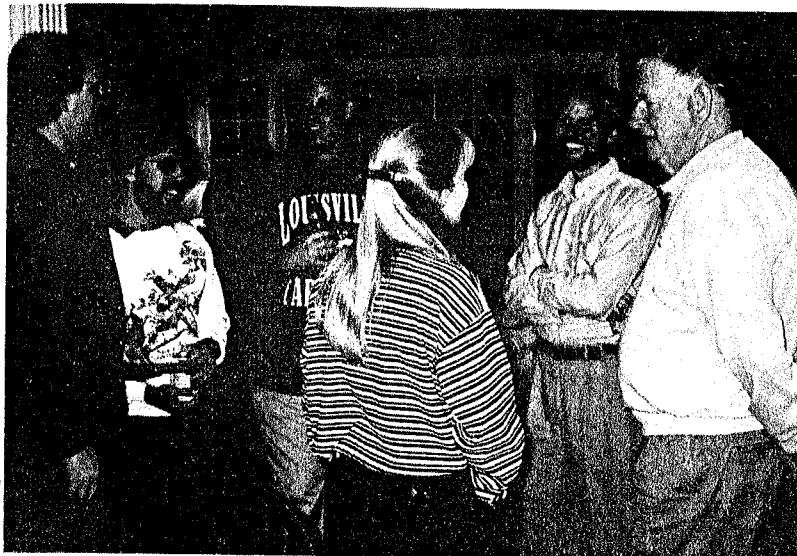
***Schinia chrysell*a (Noctuidae:
Heliothinae): Alive and Well in
Kentucky**

by James K. Adams
137 Sequoya Hall,
Dalton College,
Dalton, Georgia 30720

Two years ago, I collected the first recorded specimen of *Schinia chrysell*a from (western) Kentucky. Several of you are familiar with the genus *Schinia*, as many of the species are brightly colored (and therefore popular with collectors), and *S. chrysell*a is likewise attractively colored. The ground color

of the forewings (and hindwings) is a silvery white. Additionally, the forewings are crossed by an irregular band of tawny golden yellow, and the outer margin is likewise banded. The dorsum of the thorax is similarly golden, while the abdomen is dull white. The underside is almost completely white.

*Schinia chrysell*a is a familiar moth to me, as it is quite common in the Great Plains states (western Missouri, Kansas, Oklahoma, Texas) where I have spent most of my years and done lots of traveling. Although the moth is common and widespread, the foodplant, which is undoubtedly something typical to prairie flora, is apparently unknown. There is very little prairie habitat left in the state of Kentucky, although the western region of Kentucky near the Mississippi River does have a few prairie remnants. While traveling west through western Kentucky in late August-early September (prime *Schinia* season) in 1992, I collected a single individual (now in the University of Louisville collection) at exit 56 (mile 56) on interstate 24 at a Chevron station (south side of the interstate). This location is at the south end of Caldwell Co. (almost exactly at the junction of Caldwell, Lyon, and Trigg Cos.), 12 miles south of Princeton and 8 miles northwest of Cadiz. Last year (1994), and this year (1995), while traveling the same route in late August, I stopped at this locality, and again found several *S. chrysell*a (several in 1994; one in 1995). This very likely indicated that there is a continuing, viable population of *chrysell*a in the area, and that the original specimen was not just a vagrant. This also suggests that the relatively uncollected area of western Kentucky, particularly around and in the prairie remnants, could produce some additional interesting, and previously unrecorded, Lepidoptera for the state. An additional specimen of *S. chrysell*a from this locality has now been placed in the University of Louisville collection.



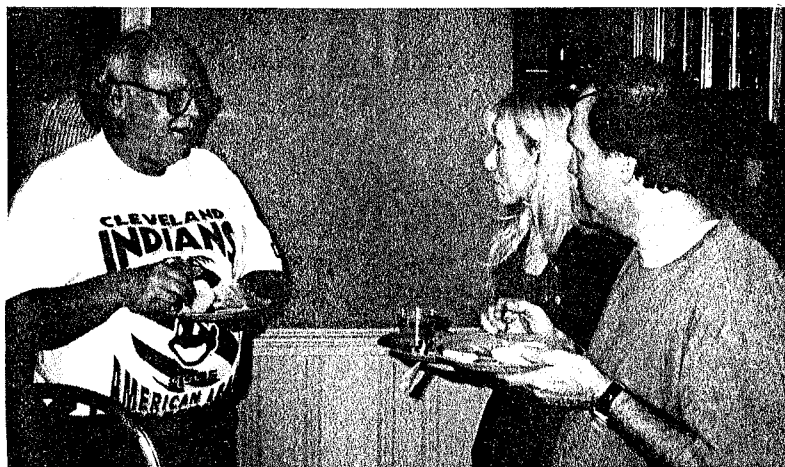
Photos from the Annual Meeting of 1995 supplied by Rogar Zebold (All personal identifications are left to right):

Top Left: Barry Nichols, John Enz, Paul Florence, Jessica Hutti, Jacob Hutti, Jim Taylor

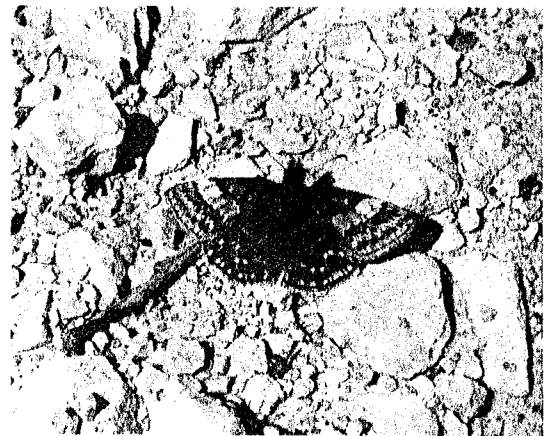
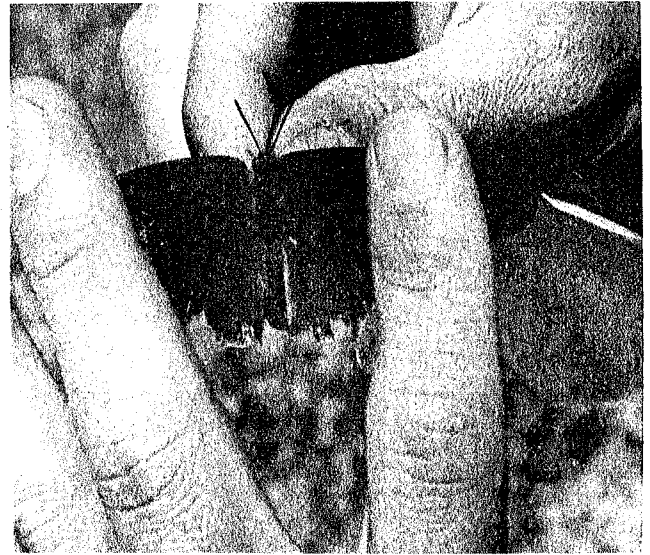
Top Right: "It was HUGE I tell you!!", Charles Covell, Roy Rings, Reed Watkins **Middle Left:** Larry Gall, George Balogh, Les Ferge

Middle Right: Jim Taylor

mugging for the campaign photo with Jessica Hutti. **Bottom:** Your Editor tries to stuff his face while Paul Florence growls at the camera. Charles Covell and Jim Taylor in the background.



Top Left: Ron Rockwell, Rozena Carr, **Top Right:** Larry Gall, Roy Rings, Floyd Preston (hidden), and Reed Watkins **Middle Left:** Larry Gall during his presentation. **Middle Right and Bottom:** Audience shot early in to the presentations.



Pictures from the Spring Field Trip to Bernheim Forest supplied by John Enz and Paul Florence:

Top Left: The crew as outlined in Covell's account. **Top Right:** *Anaea andria* (Goatweed Butterfly). **Middle Left:** John Enz whiffs one!! **Middle Right:** Here was John's intended quarry. **Bottom:** John tries to convince folks that he actually caught it.

NEW MEMBERS

Sean Cassidy,
1312 17th Ave. N,
Minneapolis, MN 55411
Home phone: (612) 522-9612.

"I am mainly interest in silk moths and rearing them. I also have some interest in butterfly rearing, but moths are my main interest."

BACK ISSUES of the *Kentucky Lepidopterist* can still be purchased. Pricing is as follows:

Volume 1-18: \$1.25 per issue/\$5.00 per volume
Volume 19: \$2.50 per issue/\$10.00 per volume
Volume 20-21: \$2.50 per issue/\$10.00 per volume

All prices are postage paid. Check out the Lep situation in Kentucky since the early days of the Society of Kentucky Lepidopterists!

FROM:
Barry Nichols, Editor
7004 Ethan Allen Way
Louisville, KY USA 40272

Loran D. Gibson
8496 Pheasant Drive
Florence, KY 41042
pd96

The *KENTUCKY LEPIDOPTERIST* is the quarterly newsletter of the Society of Kentucky Lepidopterists. Membership dues are \$10.00 per calendar year. Send dues to:

Dr. Charles V. Covell, Jr., Treasurer,
Department of Biology,
University of Louisville,
Louisville, KENTUCKY 40292 USA.

