

Kentucky Lepidopterist

Newsletter of the Society of Kentucky Lepidopterists

Volume 34, Number 2, August 2008

THE SOCIETY OF KENTUCKY LEPIDOPTERISTS

OFFICERS

President

Dr. Jeffrey Marcus
Dept. of Biology
Western Kentucky University
1 Big Red Way
Bowling Green, KY 42101-3576
E-mail: Jeffrey.marcus@wku.edu

Treasurer

Les Ferge
7119 Hubbard Avenue
Middleton, WI 53562
E-mail: ferge@netzero.net

Field Trip Coordinator

Bill Black Jr.
201 Friedman Avenue
Paducah, KY 42001-4744
E-mail: black8808@bellsouth.net

Editor

Kevin Segebarth
250 Riverside Drive
Paducah, KY 42003
E-mail: lepboys@bellsouth.net

Secretary

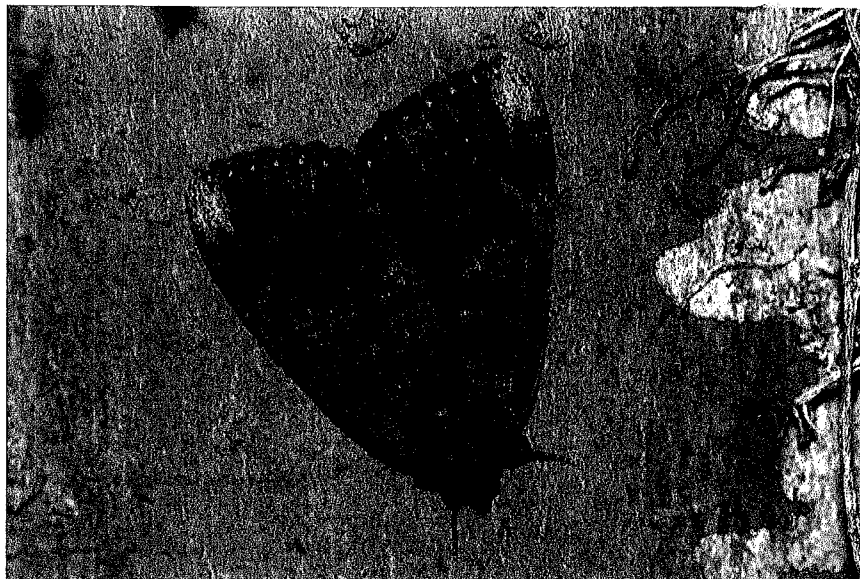
Tony Merkle
1501 Stephenson Rd.
Walton KY 41094
E-mail: jamphoto@juno.com

At-Large Members

Gerald Burnett - 2009*
Loran Gibson - 2008*
Richard Henderson - 2008*
* term expires

The Society of Kentucky

Lepidopterists is open to anyone with an interest in the Lepidoptera of the State of Kentucky. Membership dues are annual: \$12.00, and can be sent to the Treasurer: Les Ferge, (see above).



Catocala carissima

Photo by Ian Segebarth.

Some *Catocala* News for 2008

by Loran Gibson

The time period from late May into early July of 2008 was a very good time for underwing moths (*Catocala* species) in parts of Kentucky and Ohio. During that time, Bill Black used bait traps and a light trap to sample *Catocala* populations in a wet woods in Paducah, McCracken County, Kentucky where a number of hawthorn trees (*Craetegus* species) were first noticed in September of 2007. Hawthorns are the host plant for several species of small *Catocala*, and Bill's activities from late May into June revealed good numbers of *C. crataegi*, *C. mira*, and *C. titania*! I joined Bill on 18 June for an evening of bait trapping in that same woodlot, prior to departing for the Lepidopterists' Society meeting in Mississippi. Bill and I were in the process of setting up Bill's bait trap, but before Bill could attached the bottom platform to the screen cylinder, a small *Catocala* flew in and landed on the trap fabric. It was a *C. titania*! Apparently, Bill has those moths so well trained that they fly to his bait trap even before the bait is dispensed!

(Continued on page 2)

John Peacock also had good results with bait traps and his famous banana bait in a similar woodlot in Marion County, Ohio. Hawthorn feeders found there this season included *C. crataegi*, *C. mira*, *C. dulciola*, and individuals of a local population that looks something like *C. alabamiae*, but could actually be *C. praeclara*. Regardless of whether these are *praeclara* or *alabamiae*, either will represent a new county record and a sizable range extension. John collected females of a number of species, including *C. crataegi* and the "*praeclara/alabamiae*", and placed them in paper bags with small pieces of sponge soaked in a 20% sucrose solution. Several of these, including the "*praeclara/alabamiae*" have deposited ova in the bags, and several continue to oviposit. Collected ova will be held over the winter under outside conditions in hopes of getting "lab-reared" adults next summer.

In addition to the hawthorn feeders, Bill Black also collected *C. ultronia* and *C. ilia*. By the third week in July, John had added *C. ilia*, *C. minuta*, *C. ultronia*, *C. serena*, *C. innubens*, *C. illecta*, *C. lineella*, and *C. residua*.

On 5 July John and Tom Carr, another Ohio lepidopterist, collected *C. miconympha* in Vinton Co., OH. On 12 July I collected a few *C. andromedae* in a light trap in Owsley Co., KY.

During mid-July Gerald Burnett was monitoring woodlots for *Catocala* in the Ballard County Wildlife Management Area in Ballard Co., KY. By 17 July Gerald had seen approximately 10 species including *C. ilia*, *C. carissima*, *C. maestosia*, *C. nebulosa*, and *C. marmorata*. Gerald's report of seeing *C. marmorata* there again this year, in addition to several other species, was enticing for John Peacock.

I was hoping to get a chance to look for *Catocala atocala* in western Kentucky this year. Gerald's records of *C. atocala* collected on 18 July a few years ago along the loess bluffs above the Mississippi River in Carlisle Co., KY provided incentive for me to make a visit to that area as well. After exchanging a few e-mails and some telephone calls, John and I

agreed to meet Bill and Gerald for a *Catocala* weekend during 25-27 July.

John came to my house in Florence, Ky on Friday, 25 July, and we drove on to Paducah together. After meeting Bill, the three of us set out bait traps and light traps on the Streetman's farm along Massac Creek on the west side of Paducah. Weather, typical for late July, was hot and humid. As we worked to deploy equipment it became obvious that a storm was brewing. Just as we were leaving the farmer's meadow, the storm arrived! Wind, rain, lightning, and thunder put an immediate damper on hopes for good mothing that evening.

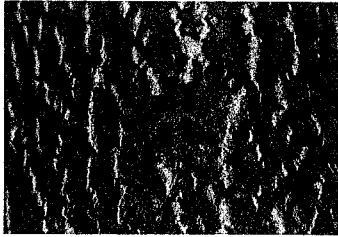
Back at Bill and Nancy's house we dried out and were treated to a fine dinner. Gerald Burnett, Kevin and Ian Segebarth and Daphne Haugh arrived and we enjoyed a great evening of conversation. We also laid plans for our field activities on Saturday.

On Saturday morning we brought in our traps. We had attracted no *Catocala* with either bait or light. The best catches of the night included a nice plusiinae moth (*Enigmogramma basigera*) that came to Bill's light trap in a canebrake, and a pan-American big-headed tiger beetle (*Tetracha (Megacephala) carolina*) which was attracted to my light trap along Massac Creek. A few moths were attracted to John's bait traps, but none were of great interest.

Later that morning, we met Gerald Burnett and Kevin, Craig, and Ian Segebarth, and we drove to the Ballard County Wildlife Management Area (BCWMA) to search for *Catocala* using the tree-tapping method. Tree-tapping for *Catocala* is simple - one walks through a wooded area where underwing moths are known to rest on tree trunks and looks for moths. *Catocala* are very well camouflaged against tree bark and seeing them is often difficult. If no moths are seen on a likely looking tree, the tree is tapped with a stick or a stick is slid up and down the tree trunk to flush any unseen moths that might be hiding there. If tapping a tree flushes a moth, it

(Continued on page 12)

will usually fly to another near-by tree and the search continues. There are a large number of huge trees in the river bottom forests of BCWMA. Many of them have vines of poison ivy, trumpet creeper, or Virginia creeper clinging to their bark. Some *Catocala* hide under leaves of these vines. Others crawl under loose bark of shagbark hickory or other tree species. Others do not hide, but rely on their



cryptic forewing patterns (*C. piatrix*, left) for protection. Some of these blend in amazingly well with the color and texture of tree bark.

After entering the woods, it wasn't long until a few *Catocala* were found. Some of us were collecting specimens while others were taking photographs. Ian Segebarth had good results photographing moths (see page 16) with a Canon digital Rebel Xti with Canon 300mm f4 image stabilizer lens and 580EX2 flash.



Before leaving BCWMA we were able to record *C. innubens*, *C. obscura*, *C. maestosa*, *C. resecta*, *C. luctuosa*, *C. lacrymosa*, *C. palaeogama*, *C. neogama*, *C. ilia*, *C. marmorata*, and *C. carissima*! Most of these were fresh, gorgeous individuals. The only *C. marmorata* observed was on a large white oak tree resting with head "up". That is unusual for this species which usually rests head "down". Unfortunately, no photographer was nearby when the moth was discovered, so we have no photo of this species.

From Ballard County we continued south along the Mississippi River to the Westvaco Wildlife Management Area (WWMA) in Carlisle County. This area was logged to some extent in the recent past, so we were not confident of finding suitable tapping habitat. A stroll along the lower drainage basin of Sandy Branch revealed an open woods with a sandy understory. Most of the low plants in the basin had been covered by sand during recent

flooding making the area ideal for tree tapping. This part of the woods had not been logged and many large trees, especially cottonwoods and black willows were growing there. These had a few *Catocala* resting on them, including a striking black and white form of *C. lacrymosa* (see p. 16), which was initially mistaken for a *C. atocala*. Additional species observed in WWMA near Sandy Branch were *C. innubens*, *C. piatrix*, *C. obscura*, *C. maestosa*, *C. neogama*, *C. carissima*, and *C. amatrix*.



John Peacock and Bill Black at Sandy Branch

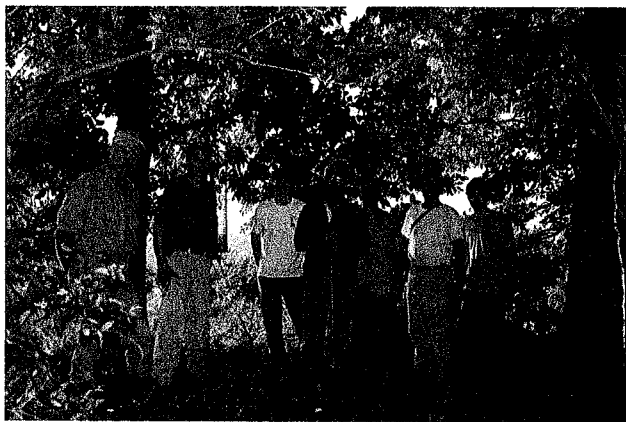
With *C. atocala* still unseen, we made our way south to a couple of areas along the top of the loess bluffs in Hickman County where this species has been recorded in recent years. Bill, John, and I set out bait traps and I set out a light trap along Bluff Road. We then moved to an area north of Columbus, KY along Drew Road. Here the bluffs are high and the drop-off to the floodplain is abrupt! From openings in the trees along this road one can see the Mississippi River in the distance. A highlight for me here was the occurrence of a few individuals of the Virginia big-headed tiger beetle (*Tetracha (Megacephala) virginica*). Ian got a photo of one of these and I collected a couple. We set out additional bait traps and a couple of light traps here and then drove north and east looking for food! At Gerald's recommendation we stopped at Luke's Restaurant in Arlington, KY. It was after 8:00 p.m. CDST before we arrived, but (Continued on page 13)

luckily, the restaurant was still open. We ate catfish and shrimp, hush puppies and cole slaw, white beans and French fries and washed it all down with iced tea and water. What a feast! Thanks once again to Gerald for his knowledge of the area! The restaurant was closed when we finally finished eating and talking. We said our good-byes there and went our separate ways after a great day in the field.

On Sunday morning John and I returned to collect our traps while the others attended church services. The light traps had a couple of *C. amatrix*, one *C. piatrix*, and one *C. amica*. Our bait traps failed to bring in any *Catocala*, although some moths, including a *Zale* species, a couple of sphingids, and a few geometrids were attracted. One of John's traps brought in 18 individuals of Abbot's sphinx (*Sphecodina abottii*)! The light traps were full of beetles so most of the moths that we had trapped were in poor condition. My two traps had one individual each of the large stag beetle *Lucanus elephas*. There were also a couple of other species of stag beetles, some cerambycids, a variety of click beetles, many water beetles, and much, much more. No doubt Charles Wright, our Coleopterist member, will be happy with the catch!

The final tally of *Catocala* species recorded during the weekend came to 14 species! We were very happy with the results of our efforts!

Many thanks to John Peacock for comments, additions, and corrections.



Group photo on Drew Road bluff

A Succinct Summary of *The Great Papaipema Chase 2007*

By Bill Black

Kentucky Lepidopterists continue their quest to collect moths of the genus *Papaipema* and to record the state-wide data. Looking back at the 2007 season reveals the emergence of several new patterns in the evolution of *The Great Papaipema Chase* itself.

Only five collectors reported data, but their efforts documented a total of 26 species! Never were more than three collectors assembled together in the field (excluding the early September KY Lep Field Trip, which did not focus on *Papaipema*). Three got together only once for a camping/collecting trip (Gibson, Henderson, and Black 2-4 Oct 07). Two collected together once (Gibson and Henderson 30 July 07). Two of the five contributing collectors (Smith and Burnett) were not able to rendezvous at all during GPC 07. Nevertheless, on their own, they pursued *Papaipema* and forwarded their data, making some of the most significant finds of the season. Each of the three who were able to rendezvous once or twice, also collected alone. Loran Gibson turns the "virtual field trip" into *The Great Papaipema Chase*, as he "aggregates the data" from disparate sites in the state sent to him by all the collectors (*included as an insert with this issue*).

Some highlights of the GPC '07:

Loran Gibson had been homing in on *P. nelita* for years. (See *Kentucky Lepidopterist*, vol.33, No.3, p. 5, Sep 07). He had collected (31 Aug 84) one of only five specimens known from KY. Without recent success, he had been placing light traps in the larval food plant, Tall Coneflower (*Rudbeckia laciniata*), during the presumed flight time based on the dates of the five KY specimens (24 Aug - 7 Sep). Then he heard that the Segebarths had collected a Tennessee *P. nelita* during a Great Smoky Mtns BioBlitz in July. This made him wonder if he'd been searching too late in KY. On 12 Jul 07
(Continued on page 14)

he found them at Red River Gorge, in Menifee Co. and in Powell Co. He had kicked off the GPC 07 early! He and Richard Henderson repeated the success on 30 Jul 07.

Dr. Jonathan Smith, of Morehead (Rowan Co.), KY, finds it hard to get away from his medical practice for extended field trips. Autumn 07 saw no relief in his busy professional schedule. However, close-by are remnant colonies of a number of prairie plants. He did the best he could - and made some spectacular catches. By setting light traps in remnant prairie sites, he collected *P. unimoda*, *P. lysimachiae*, *P. duplicata*, and *P. silphii*: - two uncommon species, a rarity, and a new state record respectively! (See *Kentucky Lepidopterist*, Vol. 34, No.1, p.6, Jun 08.) He collected a total of (18) species of *Papaipema*. These roadside prairie remnants were owned by The National Forest Service. One would have assumed they were recognized and accorded protection. But alas, the Forest Service sold them to a developer who has bulldozed them, and is assembling prefabricated housing units on the land!

At the other end of the state, Paducahan Gerald Burnett had his hands full too. As a member of the staff at Ballard Wildlife Management Area, he is hustling in October to prepare for the annual waterfowl migration and hunting season - hardly an ideal situation for taking time off. His work does acquaint him with large areas of habitat - for Lepidoptera as well as for waterfowl. So, after work on two afternoons, he set a light trap. On 14 Sep 07, at Obion Creek WMA, Hickman Co., he collected (6) different species of *Papaipema* in one trap. On 17 Oct 07, at Ballard WMA, Ballard Co., he collected (2) more *Papaipema* species, in a light trap, set this time in cane on the Ohio River. One of the species was *Papaipema n.s.* #5, and there were four specimens in the trap. This cane site advances the known range of *P. n.s.* #5 fourteen miles further north in Kentucky. Gerald Burnett's four specimens of *P. n.s.* #5 are the first to be found on the Ohio River.

Loran Gibson has collected Lepidoptera for many years in the Red River Gorge of Menifee

and Powell Counties. He has focused special attention in recent years on known *Papaipema* food plants, plants of prairie origin, and prospective locations to trap *Papaipema* adults during their flying seasons. He invited Richard Henderson and Bill Black to join him 2-4 Oct 07 to check out his sites. To their disappointment, every targeted wildflower field had been bush-hogged a week or two earlier, presumably by National Forest Service contractors to maintain open spaces.

The three collectors scouted tree lines, margins of fields, and margins of creeks for vestiges of food plants missed by the bush hogs. Creative placement of light traps enabled the capture of ten species of *Papaipema*, including *P. astuta* and *P. duplicata*. (Stone-root (*Collinsonia canadensis*), the presumed larval food plant of *P. duplicata*, was not observed.) The trio imagined the possibilities of discovery next year in Red River Gorge, if they could convince the National Forest Service to schedule mowing at least three of the fields a month later (perhaps the last week in October).

On the afternoon of 3 Oct 07, Gibson led Henderson and Black to one of the four sites in Kentucky where *P. speciosissima* is known to exist. To minimize the danger of over-collecting the small colony, they set only one light trap (8W), for only one night, agreeing to share any specimens collected. They collected five - evidence the colony was in good shape.

Finally, Bill Black intended to host a modest expedition in far Western Kentucky, operating out of Paducah. Several KY LEP members were planning to come, including Mo Neilsen and Ted Herig from Michigan. Mo and Ted had graciously hosted several Kentuckians at Mo's Quonset Hut for a field collecting trip in mid-August. (See *Kentucky Lepidopterist*, vol. 33, no. 3, p. 6-8, Sep 07.) Unfortunately, one of Black's brothers fell seriously ill, and the GPC gathering had to be cancelled. (His brother eventually recovered.) Members continued to collect alone, with 21 Oct 07 the last date of reported data for the Kentucky season.

.....

Letter from the President, August 2008

Dear Fellow Lepidopterists,

I hope that everyone has been enjoying the summer. Lately, I've been trying to spend one day a week in the field. I'm working on a project in Hart, Green, and Taylor counties in Kentucky, looking at effects of a habitat corridor being built by the Environmental Protection Agency along the Green River to protect water quality and increase the connectedness of natural areas along the river. Landowners are being paid to plant a mix of native prairie plants, bottomland forest trees, or to exclude cattle and other livestock from areas immediately adjacent to the river. The Green River is among the most biologically diverse in North America, and about 20 federally listed endangered species (none of them Leps) live in or along the river. We're using the changes in the population genetics of half a dozen Lepidopteran species along the river as a case study of what can happen to species population structure when a habitat corridor is built. Some of the larvae of these Leps feed on the plants in the seed mix, others feed on plants that are adversely affected by cattle grazing, while some feed on plants that are unlikely to be affected by the creation of the corridor. We're expected that the different Lepidopteran species will respond differently based on which category their larvae are in.

This project has gotten me out of my office, and I've been taking my students out with me (most of whom are "gene jocks"), giving them a chance to learn some field identification skills, too. I've gotten a whole bunch of new county records, especially in Green and Taylor Counties, which are not well studied. Perhaps best of all, last week, for the first time ever I saw a gold-banded skipper (*Autochton cellus*) on the wing. It's always a good feeling to see a new bug for the first time!

Finally, let me convey a piece of personal news that relates to my role in the Society of

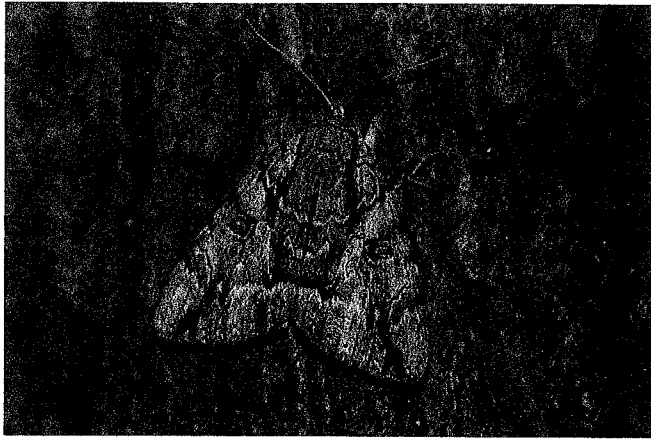
Kentucky Lepidopterists. I have been offered an endowed faculty position in the Department of Biological Sciences at the University of Manitoba in Winnipeg, Canada. The new job provides a lot that my current position at Western Kentucky University does not: access to a complete Entomology Department (where I will have an adjunct appointment), a PhD program in which I can train advanced students, and extensive lab space. This is an opportunity that is just too good for me to pass up. There are some governmental approvals that have to take place (related to immigration, etc.) before I take the position, so I will be in Kentucky for another academic year, but if all goes as planned, we will be moving in early summer 2009.

As I said in my last letter to the membership, I will be stepping down after my current term as President because it is impractical for me to serve when I am out of the country. If you value and enjoy your membership in this organization, please consider taking a more active role in its governance. Being a board member or the secretary of the Society of Kentucky Lepidopterists requires about 2 hours/year commitment during the annual meeting. The other leadership positions require somewhat more time, but again, they're not onerous. If you are interested in doing more, please drop me an email. We need you.

Thanks,
Jeff

jeffrey.marcus@wku.edu





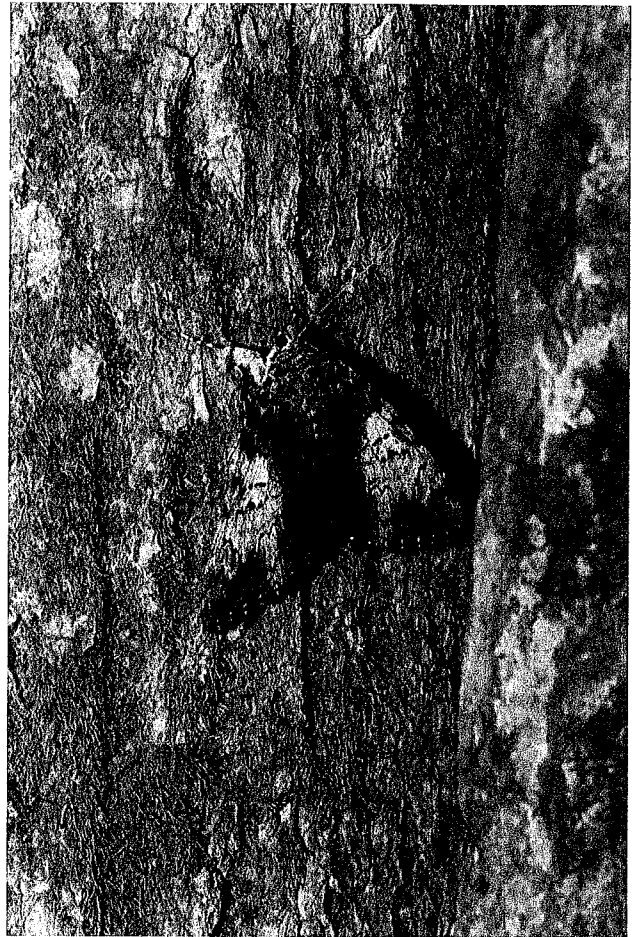
Catocala luctuosa



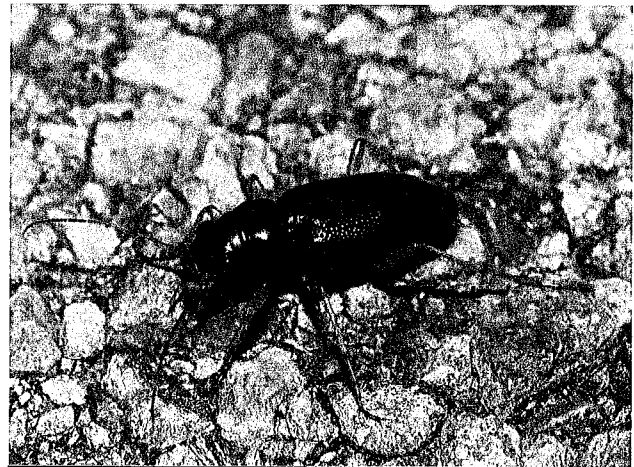
C. maestos



C. angusi



C. lacrymosa "zelica"



Tetracha (Megacephala) virginica

All photos this page by Ian Segebarth

Western Kentucky Field Trip 5-7 SEP 08

Kentucky Lepidopterists will gather at the home of Bill and Nancy Black for fun and refreshments at 7:00 pm CDT. Anyone wishing to set a bait trap or light trap around Paducah Friday afternoon should contact Bill before the weekend if guidance to a site is needed. Friday night trappers should plan to arrive before 4:00 pm CDT.

Days Inn, on US Hwy 60, at Exit 4 of I-24, has again offered a special rate of \$45.00 plus tax to KY Lepidopterists. Members can call 270-442-7500 to make reservations.

Saturday morning, collectors will rendezvous at Days Inn at 8:30 am CDT, and depart for the field at 9:00 am. Plan to take sack lunches or snacks, for eating on the road between sites, thereby maximizing collecting time. After checking several favorite butterfly sites around Paducah, the caravan will head West through Ballard, Carlisle, and Hickman Counties toward the Mississippi River. Finally, traps can be set along the Mississippi River loess bluffs.

Sunday morning, the group will rendezvous again at Days Inn at 8:30, and depart at 9:00, for the Mississippi River bluffs to collect traps and browse for morning butterflies. Moving southward, the party will check some wetland habitats in Hickman and Fulton Counties, heading ultimately to Charlie Covell's Hybridization Hot Spot - the Mississippi Riverbank below Hickman (City) in Fulton County.

Notify Bill Black if you intend to come: 270-442-9587 or black8808@bellsouth.net.

2008 Annual Meeting

October 31 - November 1

Lexington KY

Details will follow in the next issue of Kentucky Lepidopterist

Dues Reminder

Please check your dues status and bring up to date if necessary.

The year following your name on the address label indicates the last year for which dues were paid. Send payment to treasurer Les Ferge, whose address is listed on the cover page of this newsletter.

Aggregated Data from The Great Papaiema Chase 2007

| MONA | Genus | Species | # | ST | County | Location | D | M | Yr. | Col. By | Det. By | Collection | Comments | Latitude | Longitude |
|------|----------|---------------|---|----|-----------|---|----|-----|------|---------|---------|------------|---|-----------------|-----------------|
| 9466 | Papaiema | cataphracta | 1 | KY | Meritsee | FR-93 Red River Gorge Rec Area, Indian Creek 0.35 mi W Jr | 2 | Oct | 2007 | WB | WB | WB | UVLTPr(8w) | 37d 52' 35.0" N | 83d 40' 13.6" W |
| 9466 | Papaiema | cataphracta | 1 | KY | Meritsee | Leatherwood Fork @ Indian Creek | 2 | Oct | 2007 | LG | LG | LG | In UV Lt. trap | 37d 52' 35.0" N | 83d 40' 13.6" W |
| 9466 | Papaiema | cataphracta | 1 | KY | Meritsee | Leatherwood Fork @ Indian Creek | 2 | Oct | 2007 | RH | RH | RH | In UV Lt. trap | 38d 05' 54.9" N | 83d 33' 28.2" W |
| 9466 | Papaiema | cataphracta | 1 | KY | Rowan | Cane @ Clark Fish Hatchery | 2 | Oct | 2007 | JS | JS | JS | In UV Lt. trap | 38d 05' 54.9" N | 83d 33' 28.2" W |
| 9466 | Papaiema | cataphracta | 1 | KY | Meritsee | Leatherwood Fork @ Indian Creek, Red River Gorge Rec Area | 2 | Oct | 2007 | WB | WB | WB | UVLTPr(15w) | | |
| 9466 | Papaiema | cataphracta | 1 | KY | Meritsee | N side Leatherwood Creek, Cane Run Rec. Area | 3 | Oct | 2007 | LG | LG | LG | In UV Lt. trap | 38d 02' 00.9" N | 83d 31' 21.4" W |
| 9466 | Papaiema | cataphracta | 1 | KY | Meritsee | N side Leatherwood Creek, Cane Run Rec. Area | 3 | Oct | 2007 | WB | WB | WB | UVLTPr(8w) in tree fine at Polymnia uvedata | | |
| 9466 | Papaiema | cataphracta | 1 | KY | Meritsee | N side Leatherwood Creek, Cane Run Rec. Area | 3 | Oct | 2007 | WB | WB | WB | UVLTPr(15w) in tree fine at Polymnia uvedata in woods edge | | |
| 9466 | Papaiema | cataphracta | 3 | KY | Rowan | Cane @ Clark Fish Hatchery | 5 | Oct | 2007 | JS | JS | JS | In UV Lt. trap | 38d 05' 54.9" N | 83d 33' 28.2" W |
| 9466 | Papaiema | cataphracta | 2 | KY | Meade | Offer Creek Park, Cedar Hill Area | 9 | Oct | 2007 | RH | RH | RH | In UV Lt. trap | | |
| 9466 | Papaiema | cataphracta | 1 | KY | Ballard | Mayfield Creek, Hayes Cane Site #9 | 13 | Oct | 2007 | WB | WB | WB | UVLTPr(25w) live catch, 1/3 of cane dead, probably drought. | | |
| 9466 | Papaiema | cataphracta | 1 | KY | Ballard | Ballard Co. WMA, Little Turner Lake | 17 | Oct | 2007 | GB | GB | GB | In UV Lt. trap | | |
| 9469 | Papaiema | polymniae | 3 | KY | Rowan | Rt 1274, 3.3mi south of 519 | 3 | Sep | 2007 | JS | JS | JS | In UV Lt. trap | 38d 05' 10.5" N | 83d 25' 34" W |
| 9469 | Papaiema | polymniae | 5 | KY | Bath | FR-909, meadow 0.5 mi. above Gunrange | 6 | Sep | 2007 | JS | JS | JS | In UV Lt. trap | 38d 01' 42.7" N | 83d 35' 04.5" W |
| 9469 | Papaiema | polymniae | 3 | KY | Bath | FR-909, meadow 0.5 mi. above Gunrange | 20 | Sep | 2007 | JS | JS | JS | In UV Lt. trap | 38d 01' 42.7" N | 83d 35' 04.5" W |
| 9469 | Papaiema | polymniae | 1 | KY | Meritsee | N side Leatherwood Creek, Cane Run Rec. Area | 3 | Oct | 2007 | RH | RH | RH | In UV Lt. trap | 38d 02' 00.9" N | 83d 31' 21.4" W |
| 9469 | Papaiema | polymniae | 3 | KY | Meritsee | N side Leatherwood Creek, Cane Run Rec. Area | 3 | Oct | 2007 | RH | RH | RH | In UV Lt. trap | 38d 02' 00.9" N | 83d 31' 21.4" W |
| 9469 | Papaiema | polymniae | 2 | KY | Meritsee | N side Leatherwood Creek, Cane Run Rec. Area | 3 | Oct | 2007 | WB | WB | WB | UVLTPr(15w) on creek bank at Joe Pye Weed | | |
| 9469 | Papaiema | polymniae | 2 | KY | Meritsee | N side Leatherwood Creek, Cane Run Rec. Area | 3 | Oct | 2007 | WB | WB | WB | UVLTPr(8w) in tree fine at Polymnia uvedata | | |
| 9469 | Papaiema | polymniae | 3 | KY | Bath | FR-909 meadow east of Gunrange. | 7 | Oct | 2007 | JS | JS | JS | In UV Lt. trap | 38d 02' 15.4" N | 83d 35' 04.5" W |
| 9471 | Papaiema | archivrens | 1 | KY | Meritsee | For. Rd. 9A, Indian Creek & Leatherwood Fork | 30 | Jul | 2007 | RH | RH | RH | In UV Lt. trap | 37d 52' 34.8" N | 83d 40' 11.1" W |
| 9473 | Papaiema | impecuniosa | 1 | KY | Meritsee | Meadow West of Edwards Branch, Rd 23 | 2 | Oct | 2007 | RH | RH | RH | In UV Lt. trap in canebrake | 37d 50' 39.7" N | 83d 39' 53.2" W |
| 9473 | Papaiema | impecuniosa | 1 | KY | Rowan | Cane @ Clark Fish Hatchery | 2 | Oct | 2007 | JS | JS | JS | In UV Lt. trap | 38d 05' 54.9" N | 83d 33' 28.2" W |
| 9473 | Papaiema | impecuniosa | 1 | KY | Calhoun | W Fk. Clark's River, Greene Site #3 | 14 | Oct | 2007 | WB | WB | WB | UVLTPr(8w) at cane | | |
| 9473 | Papaiema | impecuniosa | 1 | KY | Calhoun | Blood Riv, NW cor. bogged bottoms, 1/4 mi N Gubbs Rd. | 14 | Oct | 2007 | WB | WB | WB | UVLTPr(15w) at turn in boggers' trail | | |
| 9473 | Papaiema | impecuniosa | 2 | KY | McCracken | Parduch, Littleville, SE wing of Carex site | 20 | Oct | 2007 | WB | WB | WB | UVLTPr(15w) | | |
| 9473 | Papaiema | impecuniosa | 1 | KY | Calhoun | W Fk. Clark's River, Hughes Site #6 | 21 | Oct | 2007 | WB | WB | WB | UVLTPr(15w) at cane betw gravel rd and old river ox bow | | |
| 9477 | Papaiema | asutia | 1 | KY | Rowan | FR-16, 0.6 mi west of 1274 | 16 | Sep | 2007 | JS | LG | JS | In UV Lt. trap | 38d 07' 39.1" N | 83d 25' 30.7" W |
| 9477 | Papaiema | asutia | 1 | KY | Meritsee | Leatherwood Fork @ Indian Creek | 2 | Oct | 2007 | RH | RH | RH | In UV Lt. trap | 37d 52' 35.0" N | 83d 40' 13.6" W |
| 9479 | Papaiema | lysimachiae | 1 | KY | Rowan | Rt-1274 remnant prairie 3.1 mi south of 519 | 2 | Oct | 2007 | JS | JS | JS | In UV Lt. trap | 38d 05' 12.3" N | 83d 25' 33.5" W |
| 9479 | Papaiema | lysimachiae | 1 | KY | Rowan | Rt-1274 remnant prairie 1.5 mi south of 519 | 14 | Oct | 2007 | JS | JS | JS | In UV Lt. trap | 38d 05' 59" N | 83d 25' 27.5" W |
| 9482 | Papaiema | speciosissima | 5 | KY | Bath | Near Cane Run Lake | 3 | Oct | 2007 | * | * | * | One UVLTPr(8w) set; specimens shared. *LG, RH, WB | | |
| 9482 | Papaiema | speciosissima | 5 | KY | Calhoun | Blood River Seeps, Osmunda Fern Site #1 | 15 | Oct | 2007 | WB | WB | WB | UVLTPr(15w) | | |
| 9483 | Papaiema | inquaeasita | 1 | KY | Bath | FR-909, mi-1.3 above gunrange, Wooded | 6 | Sep | 2007 | JS | JS | JS | In UV Lt. trap | 38d 01' 10.5" N | 83d 35' 18.3" W |
| 9483 | Papaiema | inquaeasita | 1 | KY | Heckman | Obion Creek WMA | 14 | Sep | 2007 | GB | LG | GB | In UV Lt. trap | | |
| 9483 | Papaiema | inquaeasita | 2 | KY | Carters | Mayfield Creek Hwy 1820, Barnhill property | 22 | Sep | 2007 | WB | WB | WB | UVLTPr(15w) | | |
| 9483 | Papaiema | inquaeasita | 1 | KY | Calhoun | W Fk. Clark's River, Hughes Site #2 | 29 | Sep | 2007 | WB | WB | WB | UVLTPr(15w) | | |
| 9483 | Papaiema | inquaeasita | 1 | KY | Calhoun | W Fk. Clark's River, Hughes Site #2 | 10 | Oct | 2007 | WB | WB | WB | UVLTPr(15w) | | |
| 9483 | Papaiema | inquaeasita | 1 | KY | Calhoun | Blood Riv, NW cor. bogged bottoms, 1/4 mi N Gubbs Rd. | 14 | Oct | 2007 | WB | WB | WB | UVLTPr(15w) at turn in boggers' trail | | |

| | | | | | | | | | | | | | | | |
|------|-----------|-------------|---|----|-----------|--|----|-----|------|----|----|----|---|-----------------|------------------|
| 9484 | Papaipema | nulis | 1 | KY | Weede | Other Creek Park, Cedar Hill Area | 9 | Oct | 2007 | RH | RH | RH | In UV Lt. trap, worn individuals | | |
| 9485 | Papaipema | baptisae | 1 | KY | Rowan | Light on house, Whipponwill Drive | 12 | Aug | 2007 | JS | JS | JS | | 38d 11' 10.5" N | 83d 29' 03.54" W |
| 9485 | Papaipema | baptisae | 1 | KY | Meade | Lapland, Dry Fork | 24 | Aug | 2007 | WB | WB | WB | In UV Lt. trap | 38d 07' 39.1" N | 83d 26' 30.7" W |
| 9485 | Papaipema | baptisae | 4 | KY | Rowan | Remnant prairie, m-3.1 s. of 619 | 2 | Sep | 2007 | JS | JS | JS | In UV Lt. trap | 38d 06' 12.3" N | 83d 26' 33.5" W |
| 9485 | Papaipema | baptisae | 5 | KY | McCracken | Paducah, Zip Track | 7 | Sep | 2007 | LG | LG | LG | In UV Lt. trap | | |
| 9485 | Papaipema | baptisae | 1 | KY | McCracken | Paducah, Zip Track Site | 7 | Sep | 2007 | WB | WB | WB | UVLTp at Poison Hemlock, 50m from Doglane | | |
| 9485 | Papaipema | baptisae | 1 | KY | Bath | FR-909, meadow next to gunrange | 12 | Sep | 2007 | JS | JS | JS | In UV Lt. trap | 38d 02' 15.4" N | 83d 35' 04.5" W |
| 9485 | Papaipema | baptisae | 1 | KY | Hickman | Obion Creek WMA | 14 | Sep | 2007 | GB | LG | GB | In UV Lt. trap | 38d 06' 54.9" N | 83d 33' 28.2" W |
| 9485 | Papaipema | baptisae | 1 | KY | Rowan | Cane @ Clark Fish Hatchery | 3 | Oct | 2007 | JS | JS | JS | In UV Lt. trap | 38d 06' 10.6" N | 83d 26' 34" W |
| 9485 | Papaipema | baptisae | 2 | KY | Rowan | Rt. 1274, mi 3.3 s of 619. Side of woods. | 14 | Oct | 2007 | JS | JS | JS | In UV Lt. trap | | |
| 9486 | Papaipema | birdii | 1 | KY | Hickman | Obion Creek WMA | 14 | Sep | 2007 | GB | LG | GB | In UV Lt. trap | | |
| 9486 | Papaipema | birdii | 1 | KY | Bath | FR-909, meadow next to gunrange | 22 | Sep | 2007 | JS | LG | JS | In UV Lt. trap | 38d 02' 15.4" N | 83d 35' 04.5" W |
| 9490 | Papaipema | nepeleplena | 2 | KY | Calloway | Blood River Seeps, Osamura Farm Site #1 | 15 | Oct | 2007 | WB | WB | WB | UVLTp(15w) | | |
| 9492 | Papaipema | marginidens | 1 | KY | Bath | FR-909, meadow 0.6 mi s. of gunrange | 6 | Sep | 2007 | JS | JS | JS | In UV Lt. trap | 38d 01' 42.7" N | 83d 35' 04.5" W |
| 9492 | Papaipema | marginidens | 2 | KY | Rowan | FR-16, 0.6 mi west of 1274 | 16 | Sep | 2007 | JS | JS | JS | In UV Lt. trap | 38d 07' 39.1" N | 83d 26' 30.7" W |
| 9492 | Papaipema | marginidens | 3 | KY | Bath | FR-909, meadow 0.6 mi s. of gunrange | 29 | Sep | 2007 | JS | JS | JS | In UV Lt. trap | 38d 02' 15.4" N | 83d 35' 04.5" W |
| 9492 | Papaipema | marginidens | 2 | KY | Rowan | Cane @ Clark Fish Hatchery | 3 | Oct | 2007 | JS | JS | JS | In UV Lt. trap | 38d 06' 54.9" N | 83d 33' 28.2" W |
| 9492 | Papaipema | marginidens | 1 | KY | Rowan | FR-909 meadow east of Gunrange. | 7 | Oct | 2007 | JS | JS | JS | In UV Lt. trap | 38d 02' 15.4" N | 83d 35' 04.5" W |
| 9492 | Papaipema | marginidens | 2 | KY | Meade | Other Creek Park, Cedar Hill Area | 9 | Oct | 2007 | RH | RH | RH | In UV Lt. trap | | |
| 9492 | Papaipema | marginidens | 6 | KY | Rowan | Rt-1274 remnant prairie 1.8 mi south of 619 | 14 | Oct | 2007 | JS | JS | JS | In UV Lt. trap | 38d 06' 59" N | 83d 25' 27.5" W |
| 9492 | Papaipema | marginidens | 6 | KY | Rowan | Rt 1274, 3.3mi south of 619 | 14 | Oct | 2007 | JS | JS | JS | In UV Lt. trap | 38d 06' 10.6" N | 83d 26' 34" W |
| 9492 | Papaipema | marginidens | 1 | KY | Calloway | Blood River Seeps, Osamura Farm Site #1 | 15 | Oct | 2007 | WB | WB | WB | UVLTp(15w) | | |
| 9492 | Papaipema | marginidens | 1 | KY | Calloway | W. Fk. Clark's River, Hughes Site #6 | 21 | Oct | 2007 | WB | WB | WB | UVLTp(15w) at cane, better gravel rd and old river ox bow | | |
| 9495 | Papaipema | furcata | 1 | KY | Meritsee | FR9 Red River Gorge Rec. Area, Indian Creek | 2 | Oct | 2007 | WB | WB | WB | at LG's Lt. Sheet w UV/MV | | |
| 9495 | Papaipema | furcata | 3 | KY | Meritsee | Rd. 9 Red River Gorge Rec. Area, Indian Creek | 2 | Oct | 2007 | RH | RH | RH | sheet w UV-MV | 37d 51' 27.6" N | 83d 40' 30.9" W |
| 9495 | Papaipema | furcata | 1 | KY | Meritsee | Meadow West of Edwards Branch, Rd 23 | 2 | Oct | 2007 | LG | LG | LG | In UV Lt. trap in canebrake | 37d 50' 39.7" N | 83d 39' 53.2" W |
| 9495 | Papaipema | furcata | 2 | KY | Meritsee | Meadow West of Edwards Branch, Rd 23 | 2 | Oct | 2007 | RH | RH | RH | In UV Lt. trap in canebrake | 37d 50' 39.7" N | 83d 39' 53.2" W |
| 9495 | Papaipema | furcata | 1 | KY | Rowan | backyard on whipponwill drive | 5 | Oct | 2007 | JS | JS | JS | In UV Lt. trap | 38d 11' 10.5" N | 83d 29' 03.54" W |
| 9496 | Papaipema | nebris | 2 | KY | Hickman | Obion Creek WMA | 14 | Sep | 2007 | GB | GB | GB | In UV Lt. trap | | |
| 9496 | Papaipema | nebris | 1 | KY | Carlisle | Mayfield Creek, Hwy 1820, Barnhill property | 22 | Sep | 2007 | WB | WB | WB | UVLTp(15w) | | |
| 9496 | Papaipema | nebris | 5 | KY | Carlisle | Wilson Cr., Hwy 1820, at past site of Walter Hemlock | 22 | Sep | 2007 | WB | WB | WB | UVLTp(8w) No Water Hemlock observed. | | |
| 9496 | Papaipema | nebris | 2 | KY | Calloway | W. Fk. Clark's River, Greene Site #2 | 28 | Sep | 2007 | WB | WB | WB | UVLTp(8w) at Siphium perforatum | | |
| 9496 | Papaipema | nebris | 2 | KY | Meritsee | FR9 Red River Gorge Rec. Area, Indian Creek 0.36 mi W br | 2 | Oct | 2007 | WB | WB | WB | UVLTp(8w) | | |
| 9496 | Papaipema | nebris | 4 | KY | Meritsee | Meadow West of Edwards Branch, Rd 23 | 2 | Oct | 2007 | LG | LG | LG | In UV Lt. trap in canebrake | 37d 50' 39.7" N | 83d 39' 53.2" W |
| 9496 | Papaipema | nebris | 1 | KY | Meritsee | Meadow West of Edwards Branch, Rd 23 | 2 | Oct | 2007 | RH | RH | RH | In UV Lt. trap in canebrake | 37d 50' 01.8" N | 83d 39' 37.1" W |
| 9496 | Papaipema | nebris | 1 | KY | Meritsee | West of Rt. 77 Bridge @ Red River | 2 | Oct | 2007 | LG | LG | LG | In UV Lt. trap in canebrake | 37d 50' 01.8" N | 83d 39' 37.1" W |
| 9496 | Papaipema | nebris | 1 | KY | Meritsee | N side Leatherwood Creek, Cane Run Rec. Area | 3 | Oct | 2007 | RH | RH | RH | In UV Lt. trap | 38d 02' 00.9" N | 83d 31' 21.4" W |
| 9496 | Papaipema | nebris | 3 | KY | Meritsee | N side Leatherwood Creek, Cane Run Rec. Area | 3 | Oct | 2007 | RH | RH | RH | In UV Lt. trap in Polymnia uvedata | 38d 02' 00.9" N | 83d 31' 21.4" W |
| 9496 | Papaipema | nebris | 2 | KY | Meritsee | N side Leatherwood Creek, Cane Run Rec. Area | 3 | Oct | 2007 | WB | WB | WB | UVLTp(15w) on creek bank at Joe Pye Weed | | |
| 9496 | Papaipema | nebris | 1 | KY | Meritsee | N side Leatherwood Creek, Cane Run Rec. Area | 3 | Oct | 2007 | WB | WB | WB | UVLTp(8w) in tree fine at Polymnia uvedata | | |
| 9496 | Papaipema | nebris | 1 | KY | Meritsee | N side Leatherwood Creek, Cane Run Rec. Area | 3 | Oct | 2007 | WB | WB | WB | UVLTp(15w) in tree fine at Polymnia uvedata in woods edge | | |
| 9496 | Papaipema | nebris | 1 | KY | Calloway | W. Fk. Clark's River, Greene Site #1 | 10 | Oct | 2007 | WB | WB | WB | UVLTp(15w) at cane | | |
| 9496 | Papaipema | nebris | 2 | KY | Calloway | W. Fk. Clark's River, Greene Site #3 | 14 | Oct | 2007 | WB | WB | WB | UVLTp(8w) at cane | | |

Aggregated Data from The Great Papaipeema Chase 2007

| MONA | Genus | Species | # | ST | County | Location | D | M | Yr | Col. By | Det. By | Collection | Comments | Latitude | Longitude |
|------|------------|-----------|----|----|---------|--|----|-----|------|---------|---------|------------|--|-----------------|-----------------|
| 9497 | Papaipeema | recopina | 1 | KY | Hickman | Obion Creek WMA | 14 | Sep | 2007 | GB | LG | GB | In UV Lt. trap | | |
| 9497 | Papaipeema | recopina | 1 | KY | Calway | W Fk Clark's River, Hughes Site #2 | 29 | Sep | 2007 | WB | WB | WB | UWLTP(15w) | | |
| 9497 | Papaipeema | recopina | 5 | KY | Rowan | 1274, remnt prairie, mi-1.8 s. of 519 | 16 | Oct | 2007 | JS | JS | JS | In UV Lt. trap | 38d 06' 59" N | 83d 25' 27.5" W |
| 9498 | Papaipeema | siphii | 1 | KY | Rowan | 1274, remnt prairie, mi-1.8 s. of 519 | 2 | Oct | 2007 | JS | LG | JS | In UV Lt. trap | 38d 06' 59" N | 83d 25' 27.5" W |
| 9498 | Papaipeema | siphii | 1 | KY | Rowan | 1274, remnt prairie, mi-1.8 s. of 519 | 14 | Oct | 2007 | JS | LG | JS | In UV Lt. trap | 38d 06' 59" N | 83d 25' 27.5" W |
| 9499 | Papaipeema | duplicata | 1 | KY | Rowan | 1274, remnt prairie, mi-1.8 s. of 519 | 2 | Oct | 2007 | JS | LG | JS | In UV Lt. trap | 38d 06' 59" N | 83d 25' 27.5" W |
| 9499 | Papaipeema | duplicata | 1 | KY | Menifee | N side Leatherwood Creek, Cave Run Rec. Area | 3 | Oct | 2007 | WB | WB | WB | UWLTP(8w) tree line at Polymnia uvedalia, No Stonerod obs'd. | | |
| 9499 | Papaipeema | duplicata | 1 | KY | Menifee | N side Leatherwood Creek, Cave Run Rec. Area | 3 | Oct | 2007 | WB | WB | WB | UWLTP(15w) tree line at P. uvedalia, woods edge; ditto. | | |
| 9501 | Papaipeema | eupatori | 1 | KY | Menifee | N side Leatherwood Creek, Cave Run Rec. Area | 3 | Oct | 2007 | WB | WB | WB | UWLTP(15w) on creek bank at Joe Pye Weed | | |
| 9501 | Papaipeema | eupatori | 1 | KY | Rowan | Cane @ Clark Fish Hatchery | 7 | Oct | 2007 | JS | JS | JS | In UV Lt. trap | 38d 06' 54.9" N | 83d 33' 28.2" W |
| 9501 | Papaipeema | eupatori | 1 | KY | Calway | Blood Riv, NW cor. bogged bottoms, 1/4 mi N Grubbs Rd | 14 | Oct | 2007 | WB | WB | WB | UWLTP(15w) at turn in bidders' trail | | |
| 9503 | Papaipeema | netta | 7 | KY | Powell | CR 613, near Hon Cemetery, abng Red River | 12 | Jul | 2007 | LG | LG | LG | In UV Lt. trap | 37d 50' 33.7" N | 83d 41' 51.1" W |
| 9503 | Papaipeema | netta | 4 | KY | Menifee | Rd. 9A, Indian Creek & Leatherwood Fork | 12 | Jul | 2007 | LG | LG | LG | In 2 blacklight traps | 37d 52' 34.8" N | 83d 40' 11.1" W |
| 9503 | Papaipeema | netta | 6 | KY | Powell | CR 613, near Hon Cemetery, abng Red River | 30 | Jul | 2007 | LG | LG | LG | In UV Lt. trap | 37d 50' 33.7" N | 83d 41' 51.1" W |
| 9503 | Papaipeema | netta | 4 | KY | Powell | CR 613, near Hon Cemetery, abng Red River | 30 | Jul | 2007 | RH | RH | RH | In UV Lt. trap | 37d 50' 33.7" N | 83d 41' 51.1" W |
| 9503 | Papaipeema | netta | 11 | KY | Menifee | Rd. 9A, Indian Creek & Leatherwood Fork | 30 | Jul | 2007 | RH | RH | RH | In 2 blacklight traps | 37d 52' 34.8" N | 83d 40' 11.1" W |
| 9503 | Papaipeema | rigida | 3 | KY | Menifee | Leatherwood Fork @ Indian Creek | 2 | Oct | 2007 | LG | LG | LG | In UV Lt. trap | 37d 52' 35.0" N | 83d 40' 13.6" W |
| 9503 | Papaipeema | rigida | 1 | KY | Menifee | Meadow West of Edwards Branch, Rd 23 | 2 | Oct | 2007 | RH | RH | RH | In UV Lt. trap in canebrake | 37d 50' 39.7" N | 83d 39' 53.2" W |
| 9503 | Papaipeema | rigida | 1 | KY | Menifee | FR9 Red River Gorge Rec. Area, Indian Creek | 2 | Oct | 2007 | WB | WB | WB | at LG's Lt Sheet w UVA/WV | | |
| 9503 | Papaipeema | rigida | 2 | KY | Menifee | FR9 Red River Gorge Rec. Area, Indian Creek 0.35 mi W br | 2 | Oct | 2007 | WB | WB | WB | UWLTP(8w) | | |
| 9503 | Papaipeema | rigida | 1 | KY | Rowan | 1274, remnt prairie, mi-1.8 s. of 519 | 14 | Oct | 2007 | JS | JS | JS | In UV Lt. trap | 38d 06' 59" N | 83d 25' 27.5" W |
| 9505 | Papaipeema | cerussata | 1 | KY | Hickman | Obion Creek WMA | 14 | Sep | 2007 | GB | GB | GB | In UV Lt. trap | | |
| 9505 | Papaipeema | cerussata | 5 | KY | Bath | FR-909 meadow east of Gunrange. | 27 | Sep | 2007 | JS | JS | JS | In UV Lt. trap | 38d 02' 15.4" N | 83d 35' 04.5" W |
| 9505 | Papaipeema | cerussata | 2 | KY | Calway | W Fk Clark's River, Hughes Site #2 | 29 | Sep | 2007 | WB | WB | WB | UWLTP(15w) | | |
| 9505 | Papaipeema | cerussata | 3 | KY | Menifee | Leatherwood Fork @ Indian Creek | 2 | Oct | 2007 | LG | LG | LG | In UV Lt. trap | 37d 52' 35.0" N | 83d 40' 13.6" W |
| 9505 | Papaipeema | cerussata | 3 | KY | Menifee | Leatherwood Fork @ Indian Creek | 2 | Oct | 2007 | RH | RH | RH | In UV Lt. trap | 37d 52' 35.0" N | 83d 40' 13.6" W |
| 9505 | Papaipeema | cerussata | 14 | KY | Menifee | Meadow West of Edwards Branch, Rd 23 | 2 | Oct | 2007 | LG | LG | LG | In UV Lt. trap in canebrake | 37d 50' 39.7" N | 83d 39' 53.2" W |
| 9505 | Papaipeema | cerussata | 3 | KY | Menifee | Meadow West of Edwards Branch, Rd 23 | 2 | Oct | 2007 | RH | RH | RH | In UV Lt. trap in canebrake | 37d 50' 39.7" N | 83d 39' 53.2" W |
| 9505 | Papaipeema | cerussata | 6 | KY | Rowan | Cane @ Clark Fish Hatchery | 2 | Oct | 2007 | JS | JS | JS | In UV Lt. trap | 38d 06' 54.9" N | 83d 33' 28.2" W |
| 9505 | Papaipeema | cerussata | 3 | KY | Menifee | FR9 Red River Gorge Rec. Area, Indian Creek 0.35 mi W br | 2 | Oct | 2007 | WB | WB | WB | UWLTP(8w) | | |
| 9505 | Papaipeema | cerussata | 7 | KY | Menifee | N side Leatherwood Creek, Cave Run Rec. Area | 3 | Oct | 2007 | LG | LG | LG | In UV Lt. trap | 38d 02' 00.9" N | 83d 31' 21.4" W |
| 9505 | Papaipeema | cerussata | 2 | KY | Menifee | N side Leatherwood Creek, Cave Run Rec. Area | 3 | Oct | 2007 | RH | RH | RH | In UV Lt. trap in Polymnia uvedalia | 38d 02' 00.9" N | 83d 31' 21.4" W |
| 9505 | Papaipeema | cerussata | 3 | KY | Menifee | N side Leatherwood Creek, Cave Run Rec. Area | 3 | Oct | 2007 | WB | WB | WB | UWLTP(15w) on creek bank at Joe Pye Weed | | |
| 9505 | Papaipeema | cerussata | 2 | KY | Menifee | N side Leatherwood Creek, Cave Run Rec. Area | 3 | Oct | 2007 | WB | WB | WB | UWLTP(15w) in tree line at Polymnia uvedalia in woods edge | | |
| 9505 | Papaipeema | cerussata | 7 | KY | Bath | FR-909 meadow east of Gunrange. | 7 | Oct | 2007 | JS | JS | JS | In UV Lt. trap | 38d 02' 15.4" N | 83d 35' 04.5" W |
| 9505 | Papaipeema | cerussata | 2 | KY | Calway | W Fk Clark's River, Hughes Site #2 | 10 | Oct | 2007 | WB | WB | WB | UWLTP(15w) | | |
| 9505 | Papaipeema | cerussata | 2 | KY | Rowan | 1274, remnt prairie, mi-1.8 s. of 519 | 14 | Oct | 2007 | JS | JS | JS | In UV Lt. trap | 38d 06' 59" N | 83d 25' 27.5" W |
| 9509 | Papaipeema | unimoda | 2 | KY | Rowan | FR-16, 0.6 mi west of 1274 | 16 | Sep | 2007 | JS | JS | JS | In UV Lt. trap | 38d 07' 39.1" N | 83d 26' 30.7" W |

| | | | | | | | | | | | | | | | |
|--------|-----------|-----------|---|----|---------|--|----|-----|------|----|----|---|-----------------|-----------------|--|
| 9509.4 | Papaipema | n. sp. #4 | 1 | KY | Callway | W Fk Clark's River, Hughes Site #4 | 29 | Sep | 2007 | WB | WB | UVLITP(15w) live catch, nearest cane 100m | | | |
| 9509.4 | Papaipema | n. sp. #4 | 3 | KY | Rowan | Cane @ Clark Fish Hatchery | 3 | Oct | 2007 | JS | JS | In UV Lt. trap | 38d 06' 54.9" N | 83d 33' 28.2" W | |
| 9509.4 | Papaipema | n. sp. #4 | 1 | KY | Rowan | Cane @ Clark Fish Hatchery | 5 | Oct | 2007 | JS | JS | In UV Lt. trap | 38d 06' 54.9" N | 83d 33' 28.2" W | |
| 9509.4 | Papaipema | n. sp. #4 | 1 | KY | Callway | W Fk Clark's River, Greene Site #1 | 10 | Oct | 2007 | WB | WB | UVLITP(15w) at cane | | | |
| 9509.4 | Papaipema | n. sp. #4 | 1 | KY | Ballard | Mayfield Creek, Hayes Site #9 | 13 | Oct | 2007 | WB | WB | UVLITP(25w) live catch; 1/3 of cane dead, probably drought. | | | |
| 9509.4 | Papaipema | n. sp. #4 | 5 | KY | Callway | W Fk Clark's River, Greene Site #3 | 14 | Oct | 2007 | WB | WB | UVLITP(0w) at cane | | | |
| 9509.5 | Papaipema | n. sp. #5 | 2 | KY | Callway | Blood River, Cane Site #4A, 40m S orig Site #4 | 14 | Oct | 2007 | WB | WB | UVLITP(15w) Two males one worn, one fresh. | | | |
| 9509.5 | Papaipema | n. sp. #5 | 4 | KY | Ballard | Ballard Co. WMA, Little Turner Lake | 17 | Oct | 2007 | GB | GB | In UV Lt. trap | | | |
| | | | | | | 26 Species! | | | | | | | | | |
| | | | | | | NAME ABBREVIATIONS | | | | | | | | | |
| | | | | | | WB = William R. Black Jr. | | | | | | | | | |
| | | | | | | GB = Gerald Burnett | | | | | | | | | |
| | | | | | | LG = Lorin D. Gibson | | | | | | | | | |
| | | | | | | RH = Richard A. Henderson | | | | | | | | | |
| | | | | | | JS = Jonathan Smith | | | | | | | | | |